

## A New *Gomphus* from Louisiana (Odonata, Gomphidae).

By E. M. WALKER, University of Toronto, Canada.

(Plate V).

Among some dragonflies from the southern United States, sent to the writer for identification by Mr. John Standish of the University of Oklahoma, were seven males of an apparently new species of *Gomphus* from Hammond, Louisiana, taken by Mr. Standish on March 26, 1938.

Drawings of the appendages and genitalia were sent to Dr. Septima Smith and Mrs. H. K. Gloyd but neither was able to place the species. It is very close to *G. exilis*, but differs somewhat in the form of the anal appendages and in coloration. It is certainly not closely related to any other species in Needham's Handbook of North American Dragonflies and, in fact, appears to be new.

### *Gomphus flavocaudatus* n. sp.

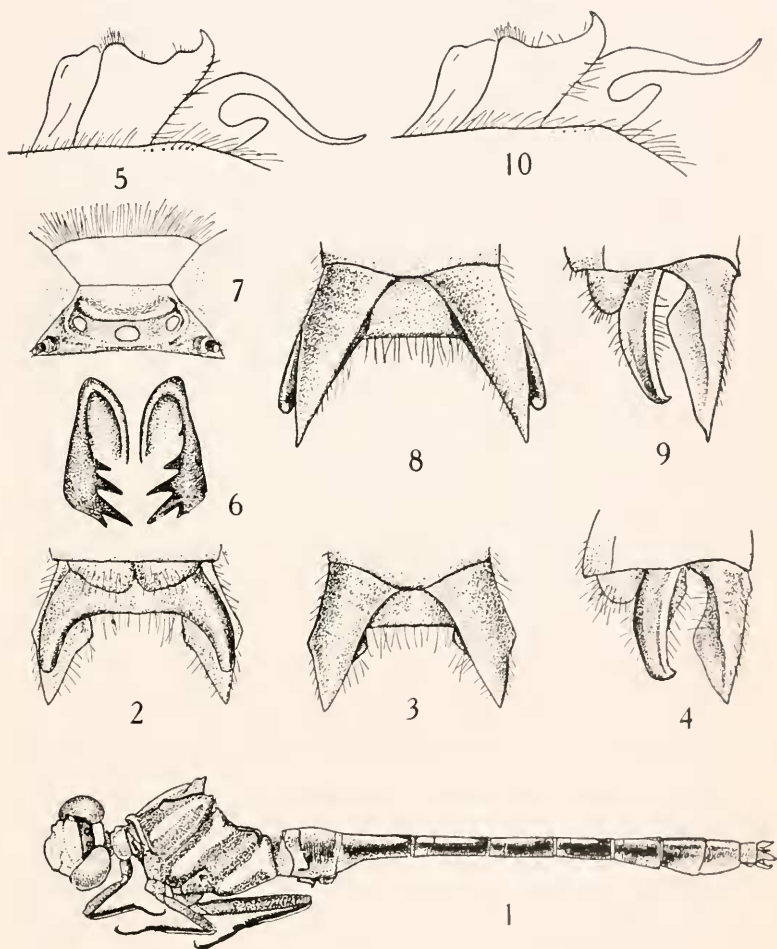
♂ (♀ unknown). Occiput and entire face, including labrum and mandibles, greenish yellow; labium and venter of head pale yellowish drab; vertex black; rear of head dark brown above, grading into ochraceous below.

Prothorax pale dull brownish, front lobe, sides and median tubercles of middle lobe, and most of hind lobe pale yellow. Synthorax reddish brown, the paler markings yellowish green, viz., the antehumeral bands, which extend from the ante-alar sinus to the anterior transverse carina, diverging somewhat cephalad, the intervening space at base nearly twice as wide as one of the bands; a narrow humeral line, not always distinguishable; the lateral thoracic bands, which are straight, the first (mesepimeral) about 1 mm. broad, nearly equal but widening slightly towards the upper ends; and the metepimeral bands which are more expanded above. Interalar area green.

Femora dark brown; tibiae nearly black with the extensor surfaces pale yellowish; tarsi black, the first two segments of the metatarsi sometimes with a dorsal yellowish streak.

Wings with costal veins yellowish, the venation otherwise blackish, pterostigmata reddish brown.

Abdomen dark brown with the following parts yellow: a mid-dorsal longitudinal stripe, extending the entire length but more or less interrupted posteriorly on each segment and intersegmentally, sometimes becoming less distinct on segments



GOMPHUS FLAVOCAUDATUS N. SP., 1-7; G. EXILIS 8-10.—WALKER.

